

Securing Water Supplies for the Future.



Katie Atkin- Communications and Stakeholder Engagement Professional

Craig Snow- Project Installation & Assembly Manager

2023

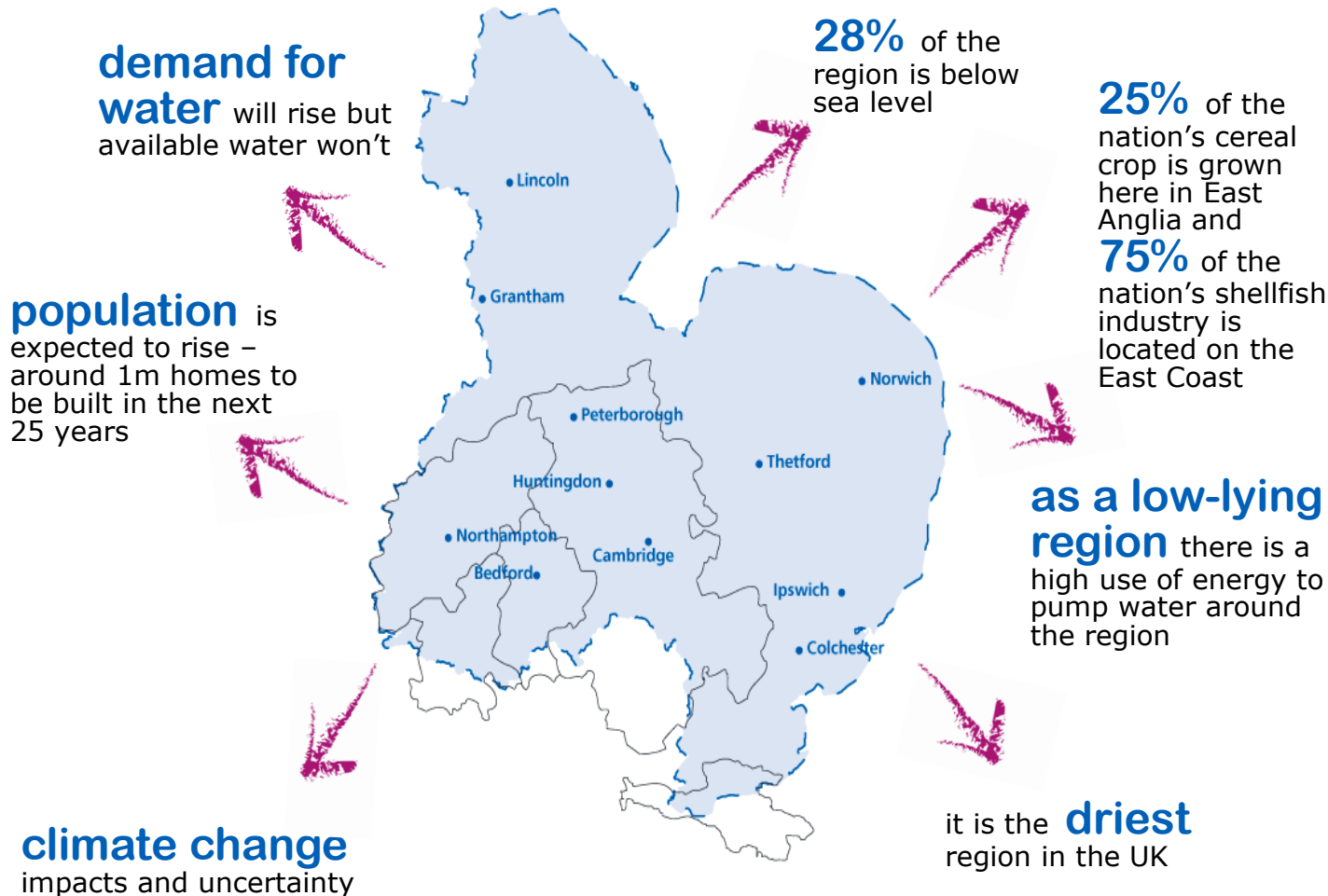


What are we doing?



- We're building a series of interconnecting pipelines to **improve our water network**.
- They will also enable us to reduce the amount of water we take from the environment and **strengthen resilience** by reducing the number of homes and businesses which rely on a single water source.
- The network will be built in stages, including a **52km pipeline** from Elsham (North Lincolnshire) to Lincoln.

Our challenges



Our 25-year Water Resources Management Plan (WRMP)

- Climate change
- Population Growth
- Environmental protection
- Resilience to drought

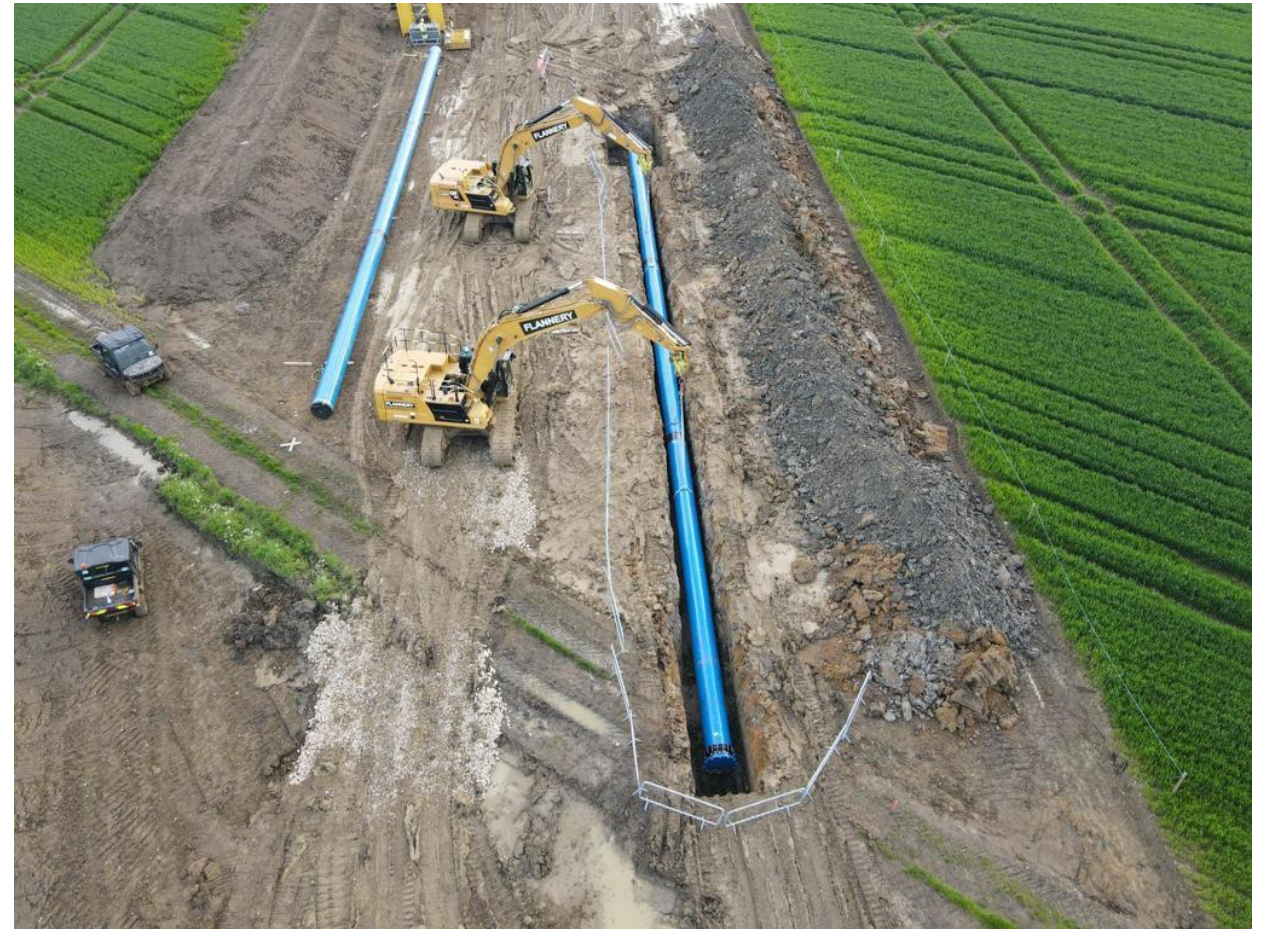
Pipeline route



Progress update?



- **100%** planning submitted
- **72%** planning approved
- **48km** of pipe lay in the ground to date across Lincoln and Norwich
- First pipe in the ground for Elsham-Lincoln at North Kelsey, Mid-May.



Engagement

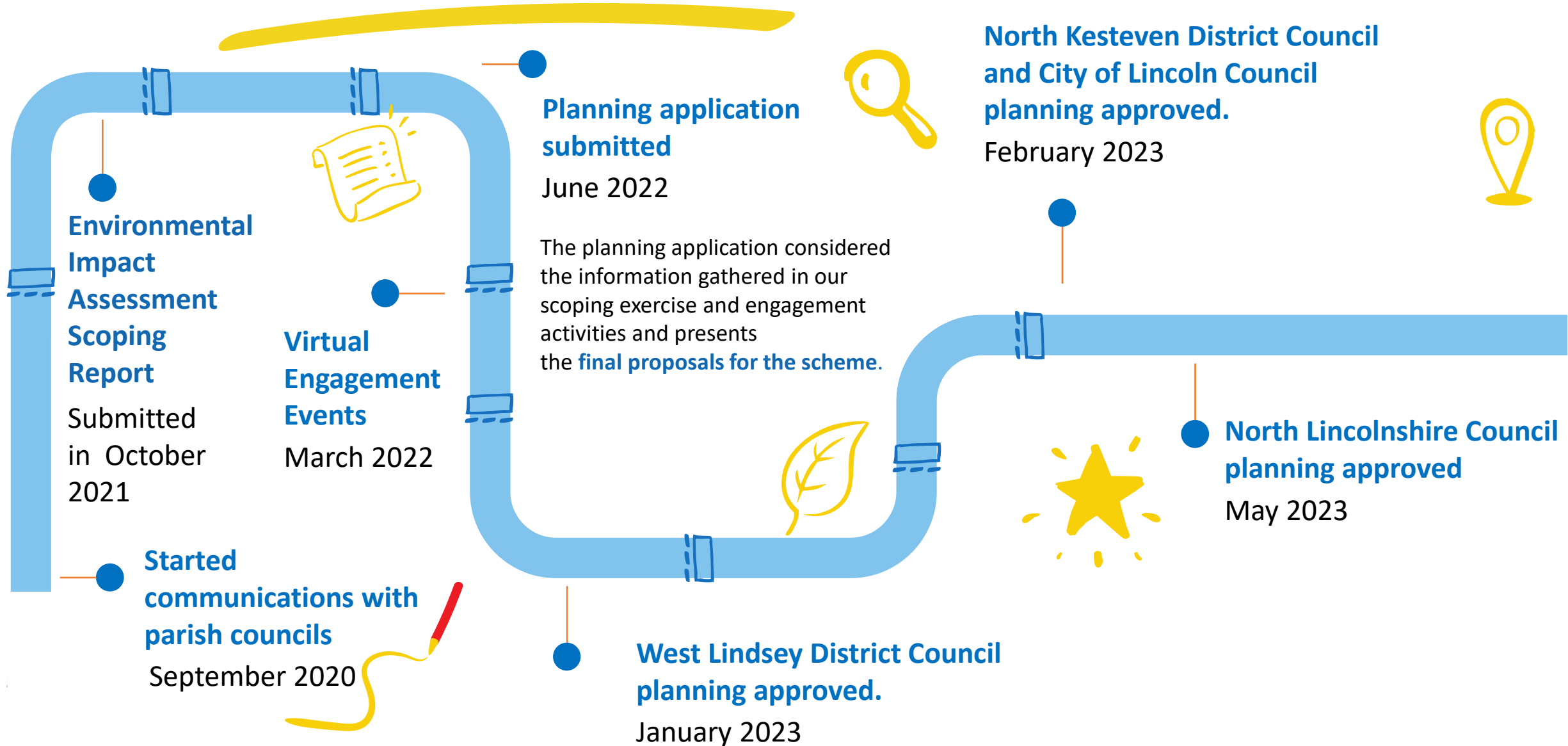


We are actively engaging with key stakeholders

- ✓ Working with **13 LPA** across the pipeline route
- ✓ **Landowners**
- ✓ National Farmers Union **NFU**
- ✓ **Natural England**
- ✓ **AONB**
- ✓ Face to face meetings with **parish councils**
- ✓ Speaker opportunities and virtual **events**
- ✓ Frequent **newsletters**
- ✓ **Volunteering** in local communities
- ✓ Website updates **“In Your Area”**



Communications



Sustainability on SPA



Carbon

The Elsham to Lincoln section of SPA is on track to deliver a 59% capital carbon reduction, utilising recycled bedding material and using biofuel (HVO) in our construction plant.



Environment

Through our biodiversity work at our new Elsham site we are creating 21,000m² of grassland and an additional 340 trees, helping to enrich the local environment.



Resilience

This project will help meet our targets to reduce the amount of water we take from the environment by 84 million litres a day, the same as 34 Olympic size swimming pools!



Community

SPA has funded four local primary schools to support with reading, with each school receiving a reading pack containing 200 new books and resources.



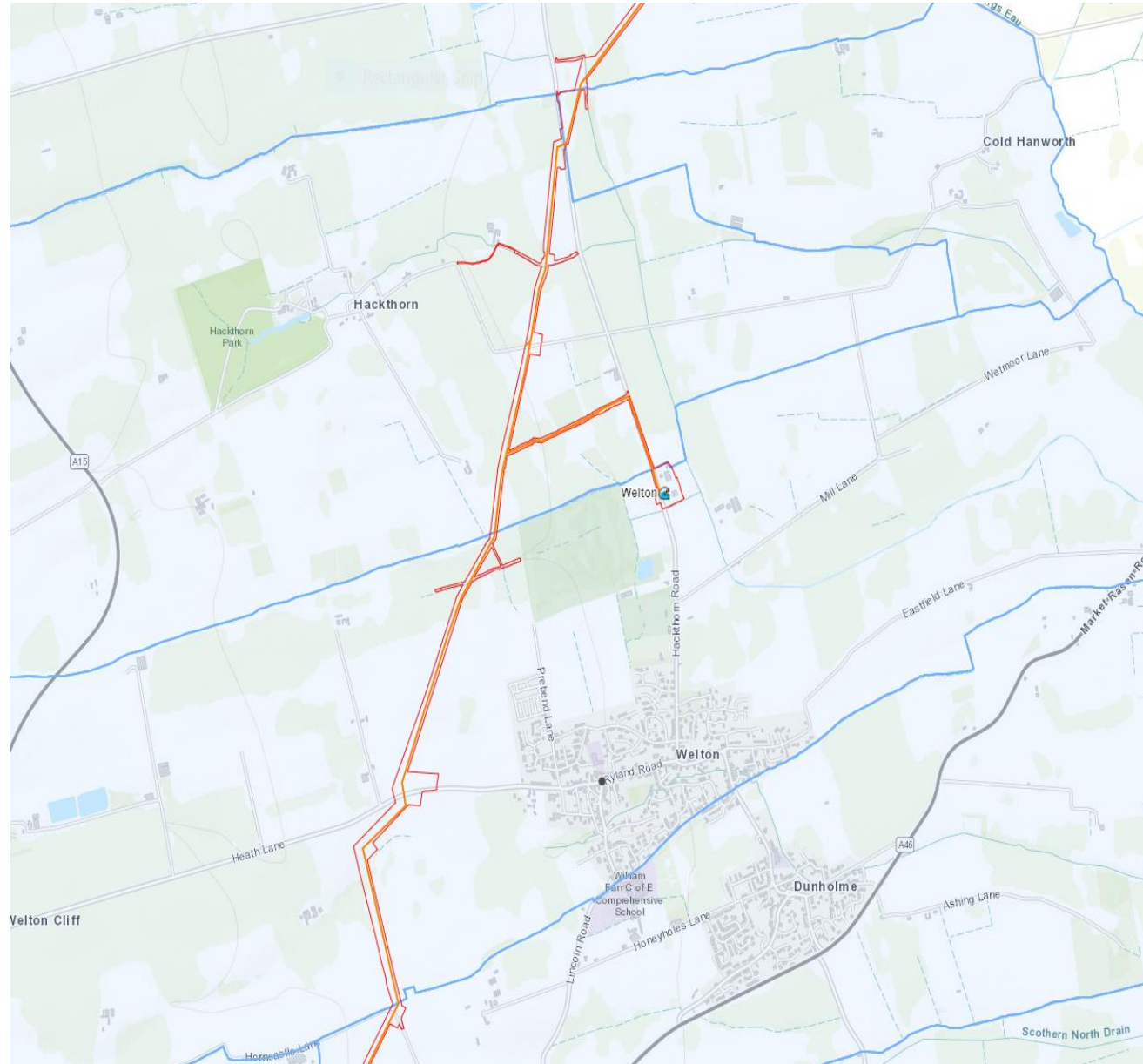
Elsham to Lincoln



Welton

Infra- main pipeline, works occurring now and going into the summer. Open cut on Heath Lane beginning of June.

Non-infra:
Flow pressure control valves connections- near to Hackthorn and Nettleham
New pumping station- transferring water from Welton Water Treatment Works.



Construction Programme



Then **main construction works began** in the **late spring of 2023** – easement followed by pipes in.

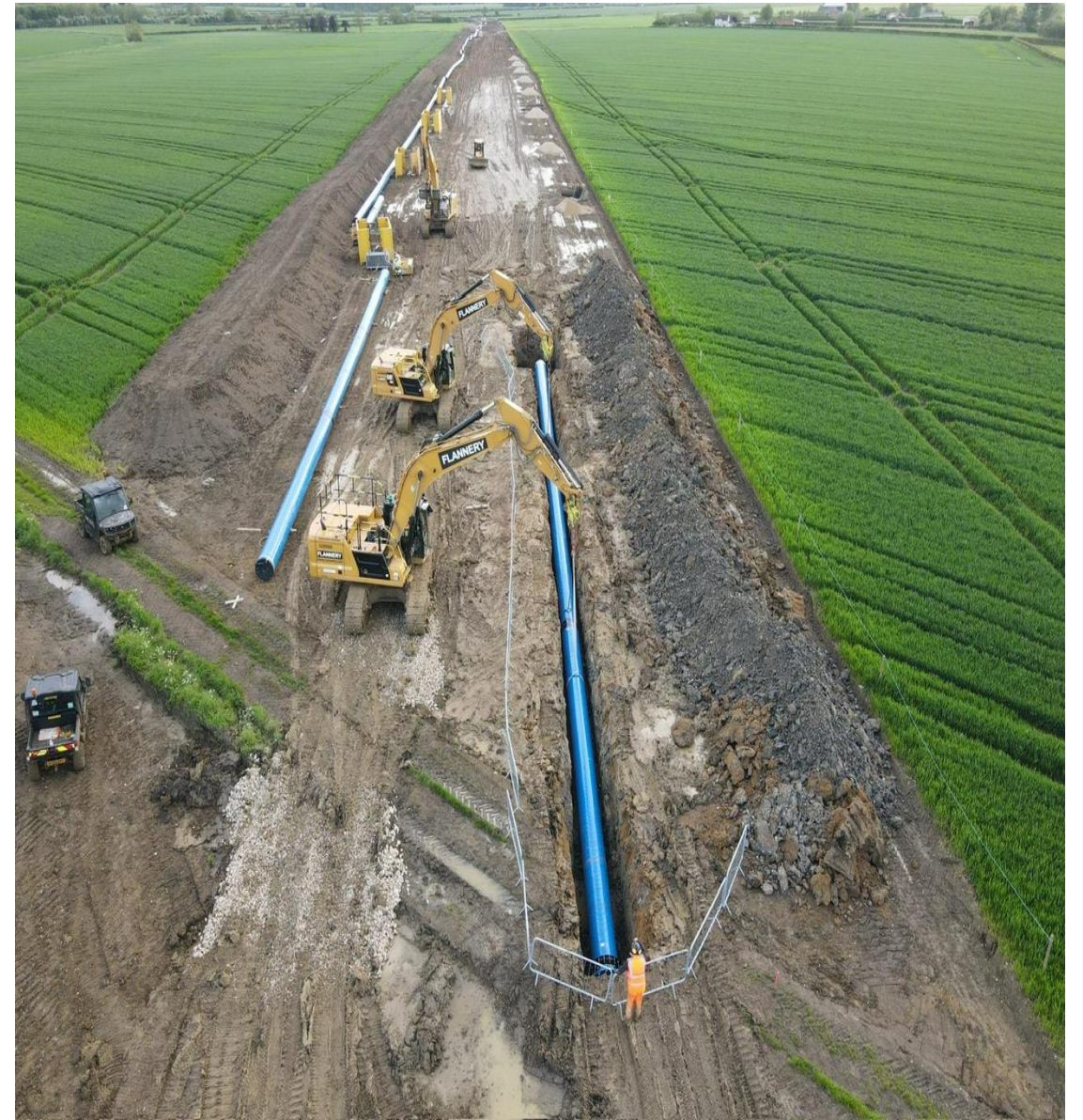


Begins with an **enabling phase**, **this commenced in spring 2023**

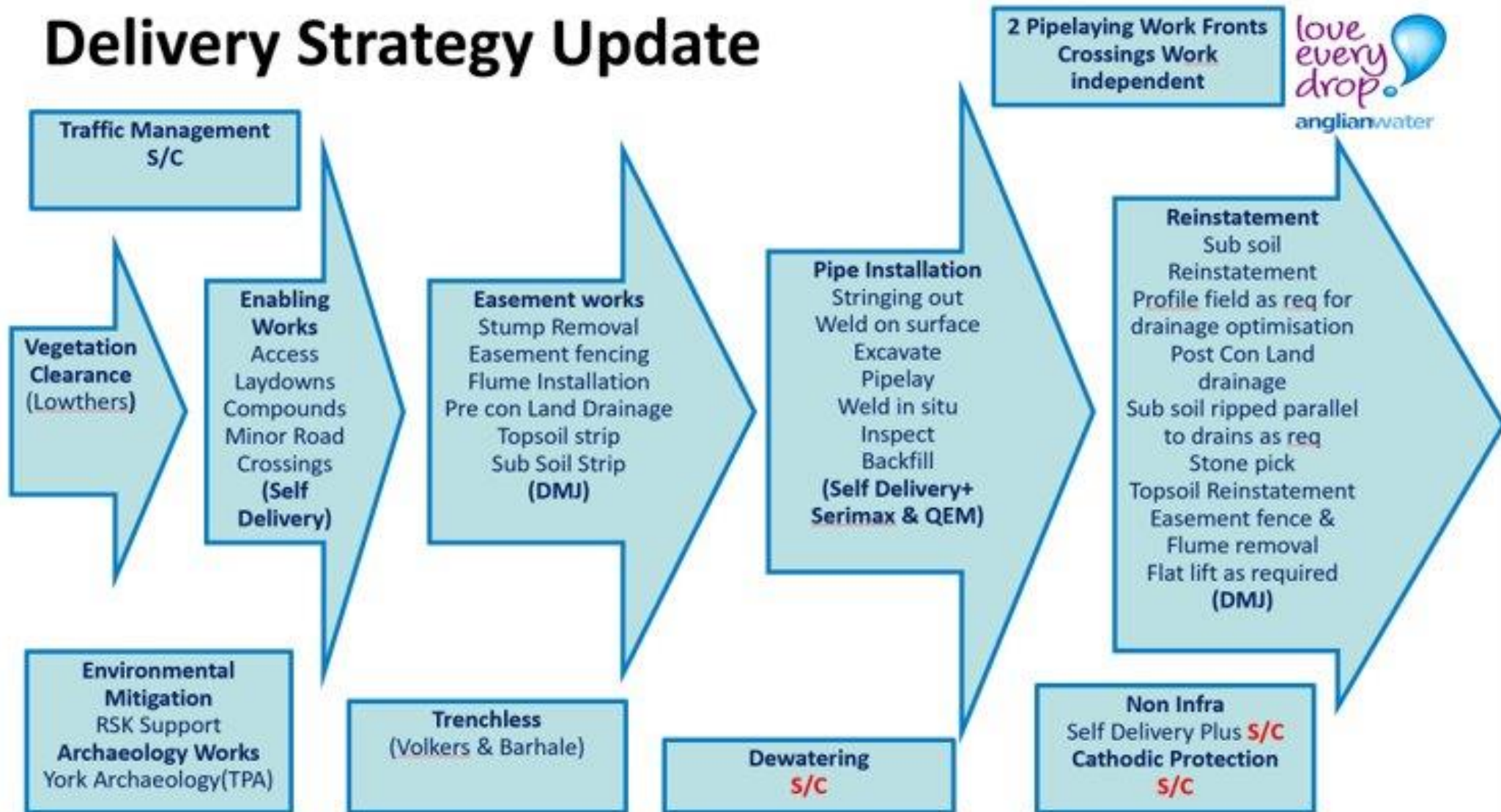




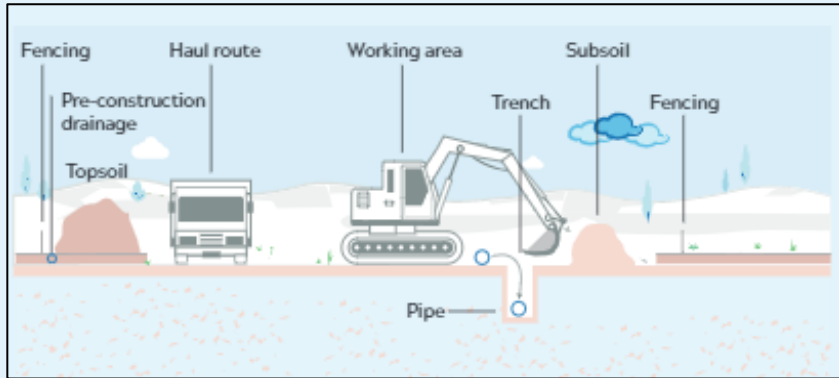
- **Reinstatement** occurring in the **Autumn of 2023**.
- **Testing and commissioning** works are expected to commence in the **Winter of 2024**.
- The whole pipeline is expected to be reinstated, tested and commissioned by **early 2025**.



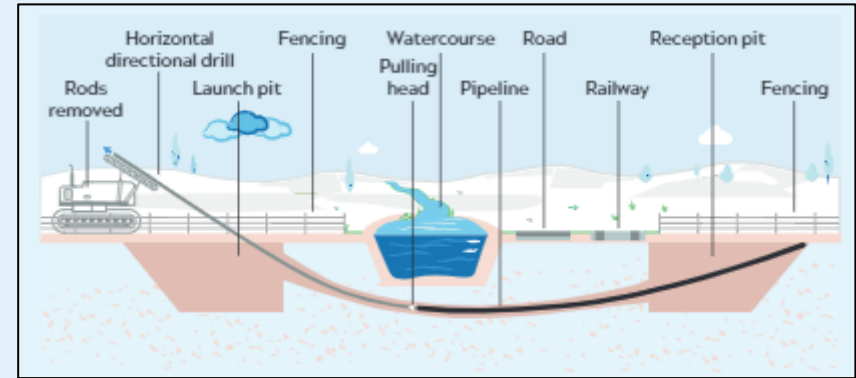
Delivery Strategy Update



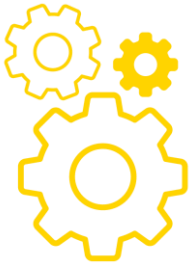
General Construction Methodology



Larger Diameter pipes, 900mm & 800mm Steel, installed using traditional open-cut methods.



Trenchless Crossings, typically, rivers, canals, railways, some A and B class roads and larger IDB channels. Horizontal Directional Drilling or Pipe Jack solutions.



Cool stuff!



Artificial fences for bats



Water vole mitigation



Using drones and thermal imaging for nesting birds



Partnership with Bookmark



Planting 2,000 additional trees in Elsham



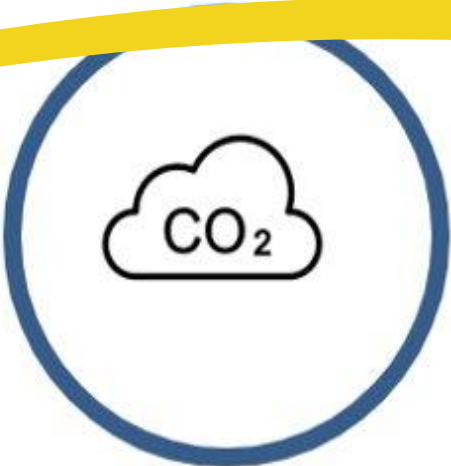
Barn owl and bat boxes



Our legacy



Make the East of England resilient



Deliver a low carbon solution



Enhance biodiversity



Have a positive impact on communities

**Are there any
community
groups we can
help with?**

